

vtech®

User's Manual

Toot-Toot Drivers®

Advent Calendar



© 2016 VTech
Printed in China
91-003269-001 UK

VTech understands that a child's needs and abilities change as they grow and with that in mind we develop our toys to teach and entertain at just the right level...

vtech Baby

Toys that will stimulate their interest in different textures, sounds and colours

I am...

...responding to colours, sounds and textures

...understanding cause and effect

...learning to touch, reach, grasp, sit-up, crawl and toddle

Birth-36 months



Pre-School

Interactive toys to develop their imagination and encourage language development

I want...

...to get ready for school by starting to learn the alphabet and counting

...my learning to be as fun, easy and exciting as can be

...to show my creativity with drawing and music so my whole brain develops

3-6 years



Electronic Learning Computers

Cool, aspirational and inspiring computers for curriculum related learning

I need...

...challenging activities that can keep pace with my growing mind

...intelligent technology that adapts to my level of learning

...National Curriculum based content to support what I'm learning at school

4-10 years

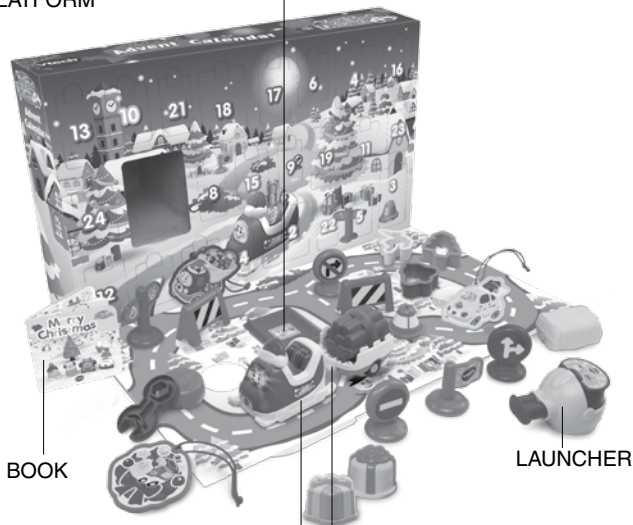


To learn more about this and other VTech® products, visit www.vtech.co.uk

INTRODUCTION

Create holiday magic with the **Toot-Toot Drivers® Advent Calendar**. This interactive advent calendar is full of surprises and includes a Christmas sleigh and 24 **Toot-Toot Drivers®** gifts. You can also flip the box into a roadway for even more excitement.

SMARTPOINT®
PLATFORM



BOOK

LAUNCHER

SMARTPOINT®
CHRISTMAS SLEIGH

SMARTPOINT®
TRAILER

INCLUDED IN THIS PACKAGE



One **SmartPoint®**
Christmas Sleigh



One launcher



One **SmartPoint®**
trailer



One Christmas
book



One cone



One directional sign



Two road blocks



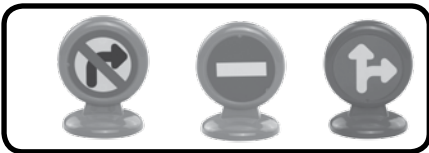
One tyre



One flag



One **SmartPoint®**
platform



Three circle signs



One spanner



One wood pile



One hay bale



Three clay cutters



Two present pieces



Three Christmas decorations



User's manual

WARNING:

All packing materials, such as tape, plastic sheets, packaging locks and tags are not part of this toy and should be discarded for your child's safety.

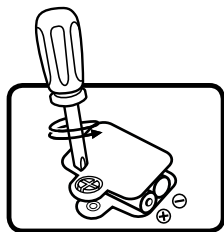
NOTE:

Please keep this user's manual as it contains important information.

GETTING STARTED

BATTERY INSTALLATION – CHRISTMAS SLEIGH

1. Make sure the unit is turned **OFF**.
2. Locate the battery cover on the bottom of the Christmas sleigh. Use a coin or a screwdriver to loosen the screw.
3. Install 2 new AAA (AM-4/LR03) batteries following the diagram inside the battery box. (The use of new alkaline batteries is recommended for maximum performance.)
4. Replace the battery cover and tighten the screw to secure.



BATTERY NOTICE

- Use new alkaline batteries for maximum performance.
- Use only batteries of the same or equivalent type as recommended.
- Do not mix different types of batteries: alkaline, standard (carbon-zinc) or rechargeable (Ni-Cd, Ni-MH), or new and used batteries.
- Do not use damaged batteries.
- Insert batteries with the correct polarity.
- Do not short-circuit the battery terminals.
- Remove exhausted batteries from the toy.
- Remove batteries during long periods of non-use.
- Do not dispose of batteries in fire.
- Do not charge non-rechargeable batteries.
- Remove rechargeable batteries from the toy before charging (if removable).
- Rechargeable batteries are only to be charged under adult supervision.

Disposal of batteries and product



The crossed-out wheeled bin symbols on products and batteries, or on their respective packaging, indicates they must not be disposed of in domestic waste as they contain substances that can be damaging to the environment and human health.



The chemical symbols Hg, Cd or Pb, where marked, indicate that the battery contains more than the specified value of mercury (Hg), cadmium (Cd) or lead (Pb) set out in Battery Directive (2006/66/EC).



The solid bar indicates that the product was placed on the market after 13th August, 2005.

Help protect the environment by disposing of your product or batteries responsibly.



For more information, please visit:

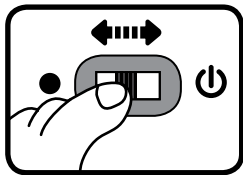
www.recycle-more.co.uk

www.recyclenow.com

PRODUCT FEATURES – CHRISTMAS SLEIGH

1. ON/OFF SWITCH

To turn the Christmas sleigh **ON**, slide the **ON/OFF SWITCH** on the Christmas sleigh to the **ON** () position. To turn the Christmas sleigh **OFF**, slide the **ON/OFF SWITCH** to the **OFF** () position.



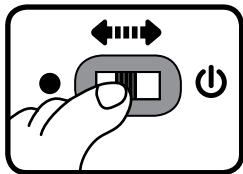
2. AUTOMATIC SHUT-OFF

To preserve battery life, the Christmas sleigh included with the **VTech® Toot-Toot Drivers® Advent Calendar** will automatically power-down after approximately 65 seconds without input. The unit can be turned on again by pressing the light-up button or pushing the Christmas sleigh quickly.

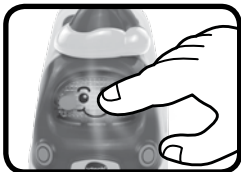
Note: This product is in try-me mode in the packaging. After opening the package, turn the vehicle off and on again to proceed with normal play. If the unit powers down while playing, we suggest changing the batteries.

ACTIVITIES – CHRISTMAS SLEIGH

1. Slide the **ON/OFF SWITCH** to the **ON** position to turn the unit **ON**. You will hear a song, a phrase and sounds. The light will flash with the sounds.



2. Press the light-up button to hear fun sounds, songs and phrases. The light will flash with the sounds.



3. Push the Christmas sleigh to hear fun sounds and Christmas melodies. While the melody is playing, push the sleigh again to add fun sounds on top of the melody. The light will flash with the sounds.



4. For added fun, the Christmas sleigh interacts with the **Toot-Toot Drivers® Advent Calendar**. Simply place the Christmas sleigh on the play set's **SmartPoint®** locations to hear the Christmas sleigh play Christmas phrases, fun sounds and short tunes.

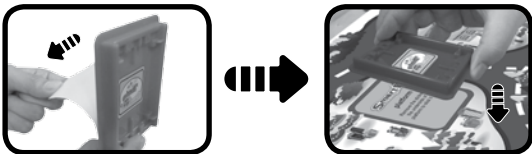
PRODUCT FEATURES - ADVENT CALENDAR

1. SMARTPOINT® LOCATION

The **Advent Calendar** includes two **SmartPoint®** locations that interact with the included Christmas sleigh or any other **Toot-Toot Drivers® SmartPoint®** vehicle (each sold separately). Simply place the vehicle over a **SmartPoint®** location to hear fun sounds, phrases and Christmas songs.

2. ACTIVITIES – ADVENT CALENDAR

1. The **Advent Calendar** gift box includes **24 windows** with gifts to countdown to Christmas. Your child can open the windows to find fun gifts.
2. One **SmartPoint®** platform is included. Remove the sticker backing from the underside of the platform and discard the backing. Stick the platform to the area of the gift box that says, “**SmartPoint®**”.



CARE & MAINTENANCE

1. Keep the unit clean by wiping it with a slightly damp cloth.
2. Keep the unit out of direct sunlight and away from any direct heat source.
3. Remove the batteries when the unit will not be in use for an extended period of time.
4. Do not drop the unit on hard surfaces and do not expose the unit to moisture or water.

TROUBLESHOOTING

If for some reason the unit stops working or malfunctions, please follow these steps:

1. Please turn the unit **OFF**.
2. Interrupt the power supply by removing the batteries.
3. Let the unit stand for a few minutes, then replace the batteries.
4. Turn the unit **ON**. The unit should now be ready to play again.
5. If the product still does not work, replace with a new set of batteries.

If the problem persists, please call our Consumer Services Department on 01235 546810 (from UK) or +44 1235 546810 (outside UK) and a service representative will be happy to help you.

IMPORTANT NOTE:

Creating and developing **VTech®** products is accompanied by a responsibility that we take very seriously. We make every effort to ensure the accuracy of the information, which forms the value of our products. However, errors sometimes can occur. It is important for you to know that we stand behind our products and encourage you to call our Consumer Services Department on 01235 546810 (from UK) or +44 1235 546810 (outside UK), with any problems and/or suggestions that you might have. A service representative will be happy to help you.

CLASS 1
LED PRODUCT



PRODUCT REGISTRATION

Visit www.vtech.co.uk/clubvtech/login
to register your VTech product

By joining the VTech Club you can also enter competitions, find out about news and events, seek expert advice for parents and let your kids play fun learning games and activities.



PRODUCT WARRANTY

Thank you for choosing this quality product from VTech. We hope it will bring many hours of entertainment, imaginative play and learning.

1. The product detailed above is covered by a one year warranty from the date of purchase, against any defects in materials or workmanship.
2. The product may be returned to the place of purchase. Alternatively the product can be returned to VTech Electronics Europe plc (see address below), with proof of purchase, without proof of purchase no replacement will be provided.
3. VTech Electronics Europe plc will examine the product and if it is found to be defective due to faulty materials or workmanship, will replace the product at their discretion.
4. If the product covered by this warranty is damaged due to misuse, modification or unauthorised repair, or because of faulty batteries, battery discharge or incorrect electrical connections, then this warranty becomes void.
5. This warranty is personal to the original purchaser and is not transferable.
6. Breakages to the LCD screen are not covered by the warranty.
7. Returns to VTech Electronics Europe plc should include a cheque or postal order for £1.50 towards the cost of return postage and packaging.
8. Products returned to VTech Electronics Europe plc, should be addressed as follows and packed carefully to avoid damage in transit (Please do not include batteries or adaptor). Please include details of the fault together with your name and address.
9. To keep an online record of your warranty, please register your product online at www.vtech.co.uk/warranty

Vtech Electronics EU PLC, c/o XPO Logistics, Warehouse 350, Cat & Fiddle Lane, West Hallam, DE7 6HE

THIS WARRANTY IS OFFERED AS AN EXTRA BENEFIT AND DOES NOT AFFECT CONSUMERS' STATUTORY RIGHTS.

This warranty is valid for the UK and Eire only. For products purchased outside the UK and Eire, please contact your local distributor or place of purchase.